

MAPICS Essentials

Creating *World-Class* Manufacturers



MAPICS Essentials offers manufacturers the core technology they need to manage mission-critical business processes, such as customer service, engineering, manufacturing, planning and distribution. This package delivers the dependability, ease of use and flexibility manufacturers have come to expect from MAPICS, and prepares them for competing in an increasingly competitive manufacturing world.

MAPICS Essentials enables you to easily implement all the processes in MAPICS ERP for iSeries Release 6 that will help you migrate smoothly to Release 7 and Java technology. Available for Release 6 and up, MAPICS Essentials includes 15 core ERP applications with a single license:

- Cross Application Support (CAS)
- MAPICS Browser
- Net-Link
- Inventory Management (IM)
- Enterprise Product Data Management (EPDM)
- Order Based Production Management (OBPM) and Production Control and Costing (PCC)
- Production Monitoring and Control (PMC)
- Procurement (PM) and Purchasing (PUR) Management
- Customer Service (CSM) and Customer Order (COM) Management
- Repetitive Production Management (REP)
- Material Requirements Planning (MRP)

Cross Application Support (CAS)

Cross Application Support (CAS) is at the heart of MAPICS ERP for iSeries, enabling you to install, maintain and manage various MAPICS applications for all users from one central location. CAS helps you run your MAPICS applications more efficiently, allowing you to create reports, control print output options, restore data, set security and add users with one execution. Available with your first installation of MAPICS, CAS saves you time, money and unnecessary frustration, and you don't need to rely on your IT department to do the job. Now you can realize managerial control of your software right out of the box with no more worries about potential business delays due to limited IT staff availability.

Cross Application Support lets you:

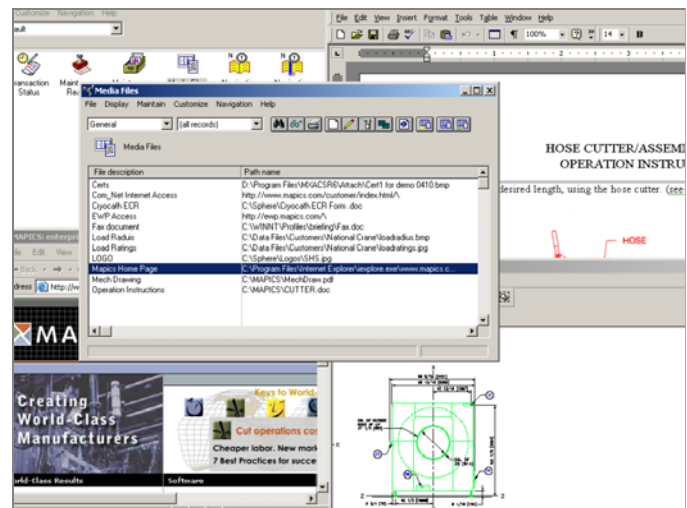
- Manage, administer and easily integrate multiple applications for multiple users from a single location
- Define unique interfaces and error messages that keep users properly informed and efficient
- Perform one offline file load for multiple applications, saving time and reducing manual keying errors
- Easily generate complex and informative reports
- Maintain security for all MAPICS applications from one location

MAPICS Browser

MAPICS Browser lets you quickly navigate information across applications throughout your MAPICS system, including customer service, vendor, engineering, finance, inventory, procurement and production information. It helps users increase their productivity without tying up limited IT resources, by empowering them to organize and display information the way they want to view it—the way that makes most sense to their job functions. Users can hide information that doesn't apply to them, arrange subsets of information to focus on only the data they need to perform specific tasks, and customize information for groups. And the familiar browser-based interface ensures users will learn to navigate and use the system quickly.

MAPICS Browser helps you:

- Empower users to organize information the way they want to see it with user-level customization, drag-and-drop arrangement of fields, attachments and bookmarking, and simple navigation
- Provide easy access to MAPICS information without requiring users to exit applications and start new sessions with other installed MAPICS applications
- Promote quicker, more accurate data analysis through sorts and subset capabilities
- Ensure better use of enterprise and IT resources by making users self-sufficient
- Increase confidence in data security



MAPICS Net-Link

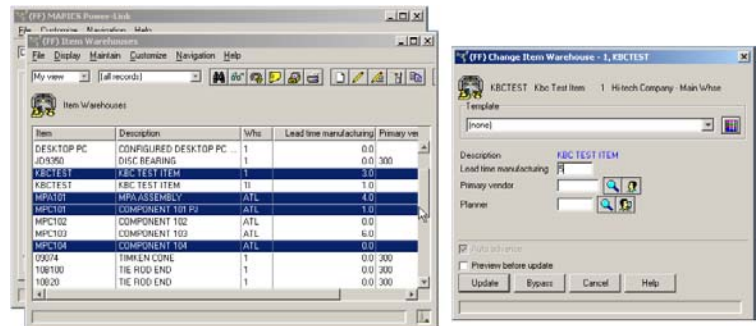
MAPICS Net-Link takes your business anywhere you need it to be. It tears down the traditional boundaries that have forced manufacturers to limit business processes to internal implementations and alleviates the need for hard-wired and expensive computer networks to keep the business running. Net-Link can be used as an intranet, helping you save on expensive PCs and maintenance, and it can be deployed externally to remote users who use it to access enterprise information via the Internet. Net-Link works directly with MAPICS data and transactions to deliver real-time, accurate information. Whether remote sales reps, field offices, outsourced manufacturers or other business partners and distributors use it, Net-Link provides secure access to your MAPICS data and transactions.

MAPICS Net-Link helps you:

- Improve customer service and satisfaction with accurate, up-to-the-minute information
- Increase productivity of internal and external employees
- Manage distributors and business partners more effectively by providing them direct access to critical information
- Quickly take your business to global markets
- Reduce IT costs

Inventory and Materials Management

MAPICS Inventory and Materials Management (IM) provides up-to-the-minute information and reduces inventory, while maintaining tight operating and audit controls. IM allows you to allocate inventory costs efficiently without sacrificing customer service levels, ensuring a maximum return on investment. With IM, you can simplify dock-to-stock transactions by closely regulating warehouse inventory. And you can monitor the quality control status of items regardless of their locations in the warehouse.

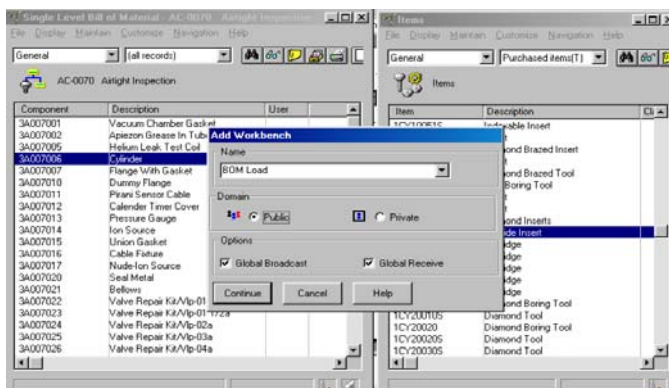


Inventory and Materials Management helps you:

- Stock and easily control items in multiple warehouses and in multiple locations within a warehouse, maximizing the efficient use of storage.
- Regulate warehouse inventory by tracking batch/lots, controlling shelf life of raw materials and end items, tracking and recording quality control items and reporting history.
- Enable sound inventory decisions by managing cost values and analysis
- Effectively control on-hand and on-order inventory positions
- Enter receipts, issues, adjustments and other transactions on an item-by-item basis at your work location

Enterprise Product Data Management (EPDM)

MAPICS EPDM links engineering to manufacturing, planning and scheduling in one comprehensive solution that enables you to effectively control and manage your product data on a global scale. EPDM makes it possible for organizations to share and maintain engineering data across multiple sites, reducing manual data entry. And it encourages collaboration by allowing you to share all types of files electronically, including CAD drawings, illustrations, documents, graphs, spreadsheets and URL links. With EPDM, you can create simulation sites from existing sites to test item planning and costing changes before applying them to your real production operations. Then streamline maintenance and track changes so future plans benefit from your analysis. You can customize your own views to display the information the way you want to see it, and then navigate with a click to related processes to get the job done.



With EPDM, you can:

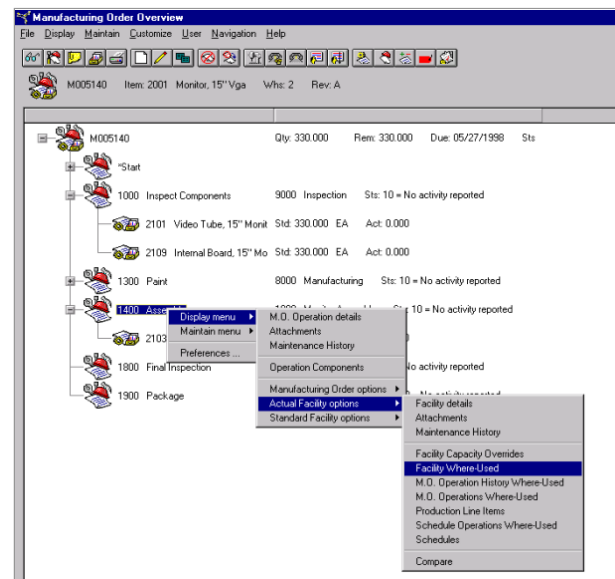
- Decrease time-to-market for new products by developing based on proven best-case scenarios
- Reduce production costs by testing plans and costing scenarios before implementing them
- Improve product quality with more accurate data throughout the product lifecycle
- Increase collaboration by sharing and accessing files electronically from anywhere in the world

Order-Based Production Management (OBPM) and Production Control and Costing (PCC)

MAPICS OBPM and PCC give manufacturers easy access to all the information needed to access, control and manage their manufacturing orders. You can immediately respond to problems on the shop floor without wasting time, steps, material and labor. You can create, maintain, report activity on, complete and close orders directly from a variety of sources, including customer orders and MRP planned orders. And you can get details on the availability of specific components before releasing orders. OBPM also enables manufacturers to respond to MRP recommendations for purchase and manufacturing orders to ensure smooth production workflow. And, with the Java architecture, users can create and manage customized views and queries to access and review information the way they need to see it.

Order-based Production Management and Production Control and Costs helps you:

- Improve workflow through increased visibility and control over the work orders
- Lower work-in-progress (WIP) due to incomplete work orders
- Increase work order information accuracy through streamlined data entry and maintenance
- Provide users and production staff with real-time access to the information they need
- Close orders quickly and easily to reduce errors and improve access to current information
- Control security access to data management by user or group



Production Monitoring and Control (PMC)

With MAPICS PMC, you can track the status of jobs, production facilities and employees based on up-to-the-minute production activity. As employees clock on and off jobs or move materials, they report their activity through terminals on the shop floor. To ensure proper data entry, information can be input by scanning bar coded documents. And PMC allows you to view the status of jobs, production facilities and employees at any given time, so you can identify and resolve issues as they occur.

Production Monitoring and Controls helps you:

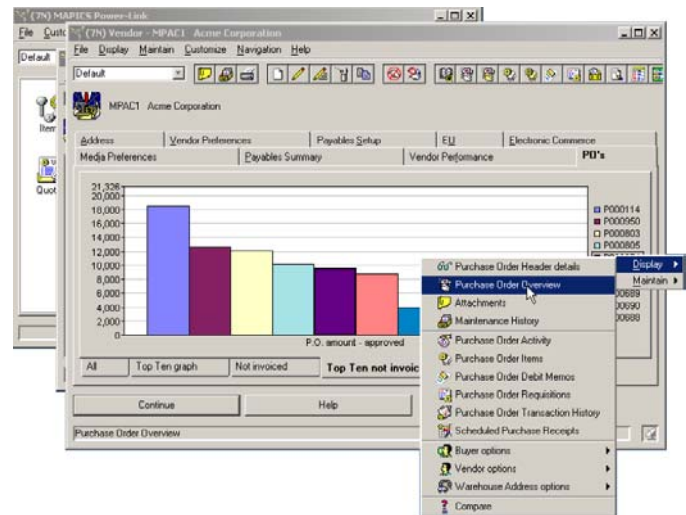
- Print bar coded shop packets, employee badges, purchasing and manufacturing receiving tickets, container labels and labor tickets
- Track the status of production orders, including expected and actual component usage, operation quantities, miscellaneous charges and order and operation schedule dates
- Track the status of production schedules
- Update collected information to other production or accounting applications

Purchasing (PUR) and Procurement Management (PM)

MAPICS Purchasing and Procurement Management let you effectively plan, source, order and monitor with efficiency and without error. PM provides an easy-to-use interface for all of your procurement tasks, so you can quickly and confidently answer your sourcing, demand visibility and pricing questions, such as: What should I buy? Whom should I buy it from? What price should I pay? Which purchase orders require immediate attention? What is the source of demand for the order? What activity to-date has occurred to this order? With PM, you'll improve organizational productivity and efficiency by better managing your buyers, vendors, vendor/item relationships and the requisitions, quotes, contracts and purchase orders that go along with them.

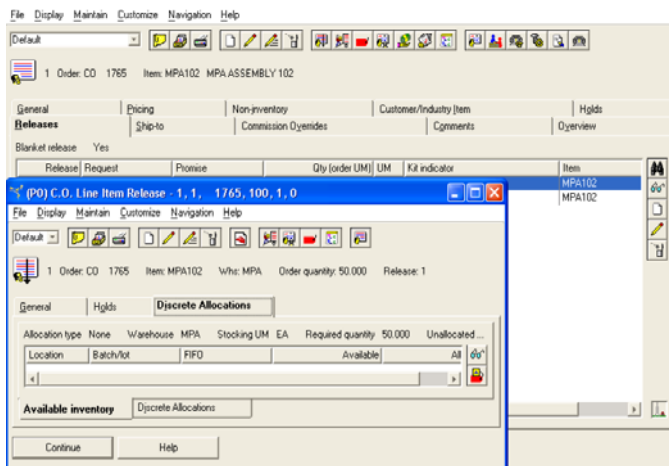
Purchasing and Procurement Management helps you:

- Reduce administrative and clerical time for processing and expediting
- Reduce lead time for materials with improved tracking and control of purchase orders
- Enjoy cross application flexibility, automatically creating purchase orders through integration with MRP or IM
- Improve efficiency by mass creating, deleting and changing options that are reflected globally on most PM projects
- Eliminate the strain on IT resources by enabling users to customize what they see and how they see it



Customer Service Management (CSM) and Customer Order Management (COM)

The key to any successful business is developing solid customer relationships ... and it all starts when a customer places an order. MAPICS Customer Service and Customer Order Management modules are responsive to the realities of the workplace, handling special requests, varied pricing and a myriad of customer requirements with ease. The applications improve your ability to properly serve customers by streamlining the ordering process with sophisticated automation that captures commissions, creates invoices automatically, passes backlog information to production and planning, notifies shipping, calculates and applies taxes and maintains complex pricing schedules. From taking orders efficiently and providing current information to shipping the right product at the right time, COM helps you satisfy customers throughout the order management process.



Customer Service and Customer Order Management helps you:

- Shorten the order cycle with intelligent application flow, the flexibility to handle exceptions and special requests, and by integrating customer requirements with planning, production, analysis and management functions
- Reduce paperwork and accommodate order changes easily with sophisticated, yet easy-to-use and maintain automation and integration
- Automatically verify customer and item information and perform credit checks
- Set proper expectations with customers by automatically tracking availability, preventing over-commitment and delivering accurate available-to-promise dates
- Share data with accounting to ensure proper and timely payments

Repetitive Production Management (REP)

Repetitive Production Management—a plant-floor control application—supports continuous or flow environments, providing essential scheduling, tracking and materials management capabilities. Designed for manufacturers that build or assemble products on a daily or frequent basis, REP gives you the ability to control manufacturing processes through production schedules rather than traditional shop orders. Working hand-in-glove with the Inventory Management and Product Data Management modules, REP controls the flow of materials to the production lines. It reports the completion of product, triggering backflushing of both material and labor usage. And with component flow, REP lets you prime the line and stage components at point-of-use, replenish inventory that reaches pre-defined quantities, and run activity reports. REP also integrates with MAPICS financial applications.

Repetitive Production Management helps you:

- Determine realistic schedules (by line-by day, with no formal work order identification) and monitor their performance on a timely bases
- Reduce manufacturing costs
- Reduce line congestion and material obsolescence
- Monitor schedule performance on a timely basis
- Maintain tight operating and audit controls
- Improve productivity and responsiveness to customers

Material Requirements Planning (MRP)

MAPICS MRP helps manufacturers review and enter requirements for master-level items, plan and release supply orders, and make quick modifications to released orders when requirements change. It ensures manufacturers have the right parts and components on hand to fill orders, and it projects when to produce or purchase materials to meet demand. During planning runs, MRP examines inventory balances and generates planned orders if requirements exceed the quantity available so those items can be replenished by a specific date. Working alone or in conjunction with MAPICS Master Production Schedule Planning, InterSite Logistics or Capacity Requirements Planning, MRP helps manufacturers plan production and purchase orders to meet forecasted and actual customer requirements.

Material Requirements Planning helps you:

- Ensure you have the proper inventory to fulfill demand
- Free plants to be used for production, instead of inventory
- Improve bill of material accuracy
- Deliver timely planning information for suppliers
- Generate automatic recommendations for production and purchase quantities, as well as start dates
- Reduce the instance of manual and human errors by automating the process

MAPICS Essentials Benefits

- Improved user efficiency and productivity
 - Easier access to information
 - Powerful navigation capabilities
 - No re-keying, fewer errors and faster transaction processing
- Extend beyond your four walls
 - Rapid deployment with MAPICS Net-Link
 - Better and easier collaboration with business partners
- Improved decision support
 - Customized views
 - Charts and graphics
 - Data export capability (I.e. Microsoft Excel)
- Dramatically reduce operational cost and increase ROI
 - Users can now customize user interface on their own
 - Reduce training expense for new employees
 - Extend and share your info with MAPICS Net-Link
- Evolve easily to the latest, web-based technology

Creating *World-Class* Manufacturers



About MAPICS

MAPICS is the largest global solutions provider focused exclusively on manufacturing and the needs of manufacturing companies. Building on more than 25 years of industry experience and proven success, MAPICS helps manufacturers be world class by gaining market share, operating at peak efficiency, and exceeding customer expectations. MAPICS solutions include software - extended ERP, CRM and supply chain management - and professional services. These solutions are implemented on the two industry-leading technology platforms, Microsoft and IBM.

MAPICS has implemented solutions at more than 10,000 customer sites in more than 70 countries. For more information, visit us at www.mapics.com.

© Copyright 2003, MAPICS, Inc. MAPICS is the largest, global solutions provider focused exclusively on manufacturing. Building on more than 25 years of industry experience and proven success, MAPICS helps manufacturers be world class by gaining market share, operating at peak efficiency, and exceeding customer expectations.

MPOVESS

Benefits

- Manage and administrate multiple applications for multiple users from a single location
- Integrate multiple applications
- Define unique interfaces and error messages that make sense to your users to keep them properly informed and efficient
- Perform one offline file load for multiple applications, saving time and reducing manual keying errors

Cross Application Support (CAS)

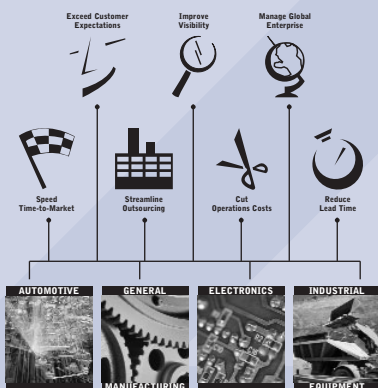
Cross application support (CAS) is at the heart of MAPICS ERP for iSeries, enabling you to install and manage various MAPICS applications for all of your user groups from one central location. With extensive inquiry, reporting and maintenance functionality, CAS helps you run your iSeries applications more efficiently, allowing you to create reports, control print output options, install new MAPICS applications, restore data, set security and add users with one execution.

The Challenge

Manufacturers must use various applications to keep their operations running at the most efficient pace. From supply chain management applications to ERP solutions, organizations must support multiple users on multiple applications—an often daunting task for any IT department.

The MAPICS Solution

MAPICS CAS allows you to control the installation, maintenance and management of software—including backups and restores, security per application and report outputs—from one location, saving time, money and unnecessary frustration.



Features

Inquiry	Review and maintain detailed status information for applications, jobs, data entry files, PTF (Program Temporary Fix), system control data and unattached jobs
Reports	Generate reports, including application log history, MAPICS master file information, questionnaire results from install/tailor questionnaires, group job file listing, field data dictionary and field attributes
Maintenance	Maintain security for all MAPICS ERP for iSeries applications, manage application information, monitor job queues, setup personal menus for each user, activate and deactivate interfaces, assign work station IDs, override system printer values, control printer override options, and manage menu, action and task functions
Backup and Recovery	Back up your valuable data or application library information to tape or disk. Retrieve and restore files from tape or disk. And reorganize master files to make disk space available
Install and Tailor	Install and tailor MAPICS applications
Extended Environment Support	Create, maintain, delete and list your library and environment information
Offline Loading	Edit and/or load offline files to master files
Multiple Currency Support	Display, maintain, synchronize and print exchange rate and currency information. Update alternate currencies to enable euro toggling
VAT and Sales Tax Support	View, maintain, archive or delete tax table, register and code information
EDI Functions	Activate, deactivate and maintain Electronic Data Interchange capabilities along with the associated EDI trading partners
Journal Management	Create, maintain and delete journal entries and journal receivers

Requirements

CAS is included with your first installation of any MAPICS ERP for iSeries application.

MAPICS is the largest, global solutions provider focused exclusively on manufacturing. Building on more than 25 years of industry experience and proven success, MAPICS helps manufacturers be world class by gaining market share, operating at peak efficiency, and exceeding customer expectations.

©Copyright 2003 MAPICS, Inc. MAPICS is a registered trademark of MAPICS, Inc. All other brand and product names may be trademarks of their respective owners. MPDSCAS

Benefits

- Decreases time to market for new products
- Reduces production costs
- Improves product quality
- Ensures more accurate data
- Increases collaboration

Enterprise Product Data Management

MAPICS Enterprise Product Data Management (EPDM)—a critical component of the ERP for iSeries Java Architecture—links engineering to manufacturing, planning and scheduling into one comprehensive solution that enables you to effectively manage your global enterprise with powerful inquiry capabilities, integration with workflow and the necessary tools for creating and maintaining your product data.

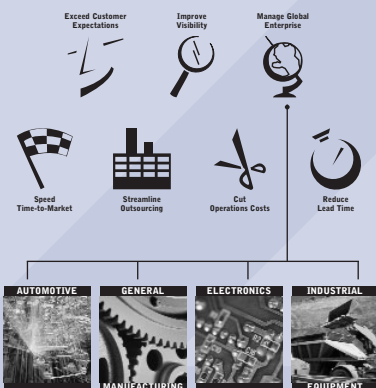
The Challenge

In today's distributed enterprise, where development teams often consist of members from around the world who are collaborating on numerous projects at any given time, managing product data can be tricky. Failing to manage it effectively will unravel all of the hard work you have devoted to maintaining a balanced production structure.

The MAPICS Solution

With MAPICS EPDM, you can control and manage your inventory on a global scale. MAPICS EPDM makes it possible for organizations to share and maintain engineering data across multiple sites, reducing manual data entry needs. MAPICS EPDM also encourages collaboration, enabling you to share all types of files electronically, including CAD drawings, illustrations, documents, graphs, spreadsheets and URL links.

Not sure about the plan you've made? Create simulation sites from existing sites to test item planning and costing changes before applying them to your real production operations. Then streamline maintenance and track changes so future plans benefit from your analysis. Visibility to the plan and related processes can also be an issue; fortunately, EPDM takes advantage of the MAPICS Java Architecture features. Customize your own views to display the information the way you want it presented to you, then navigate with a click to related processes to get the job done.



Multi-site Maintenance

Sites

Multiple Revisions

Routing Maintenance

Maintenance History

Navigation

Security

Reason Codes

Visibility

Bill of Material

Communication

Features

Maintain data for multiple sites—copy or “drag and drop” data between sites to save time and eliminate keystroke errors

Create simulation sites from existing sites to test planning, and costing scenarios, and then apply the best version to your actual production operations. Quick change, Mass Change and Mass Delete functions available

Maintain multiple revisions of an item and use them in MPSP and MRP plans

Add, modify or delete routing operations directly from a card (client architecture). Maintain multiple routing versions for an item revision

Get quick access to maintenance history that includes before and after scenarios

Use advanced navigation between processes via toolbar buttons, auto-generated menus, hierarchical tree structures and detail drill-down capabilities. See the data the way that you want to see it

Control access to content and the sequence of information viewed, while maintaining ease of use

Track engineering change orders; rename fields

Extend visibility of the product data to your vendors, suppliers and customers for integrated collaboration

Maintain multiple Bills of Material for an item revision

EPDM sends routings, facilities and associated costs to Production Control and Costing, sends Bills of Material, item processes and costs to planning (MRP), provides Bills of Material, item numbers, item processes and cost information to inventory (IM), sends product structure detail for customer order/option items, and more

Availability

MAPICS ERP for iSeries Release 4

Requirements

MAPICS CAS

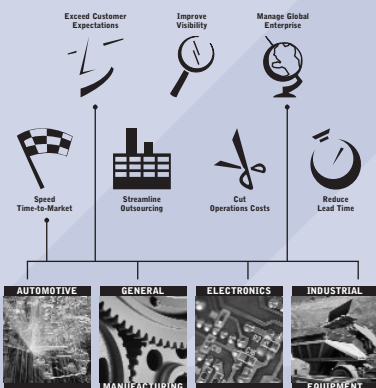
MAPICS is the largest, global solutions provider focused exclusively on manufacturing. Building on more than 25 years of industry experience and proven success, MAPICS helps manufacturers be world class by gaining market share, operating at peak efficiency, and exceeding customer expectations.

©Copyright 2003 MAPICS, Inc. MAPICS is a registered trademark of MAPICS, Inc. All other brand and product names may be trademarks of their respective owners. MPDSEPD



Benefits

- Improves workflow through increased visibility and control over the work orders
- Lowers Work in Progress (WIP) due to incomplete work orders
- Increases work order information accuracy through streamlined data entry and maintenance
- Closes orders quickly and easily, resulting in reduced errors and timely access to information
- Controls security access to data management by user or group
- Provides users and production staff with real-time data access—create, edit and manage queries and data views



Order-Based Production Management (OBPM)

MAPICS OBPM, part of the MAPICS ERP for iSeries Java Architecture applications, is a flexible production management solution that allows manufacturers to manage production orders, from “review and release” to production, receipt and closeout points. From interactive review and closeout of pending orders to producing shop packets and prioritized work lists for released orders, OBPM provides manufacturers with easy access to all of the information you need to access, control and manage your production environment.

The Challenge

Plant personnel require immediate daily access to a diverse range of information to perform their tasks. While the shop floor personnel are busy identifying daily priorities, the work center supervisors are monitoring customer order status, inventory status, work order status, work orders and other information to maintain workflow efficiency throughout the production process. Without access to mission critical information, the production process suffers.

The MAPICS Solution

OBPM provides the tools needed in a shop floor production arena, allowing manufacturers to immediately respond to order decisions without wasting time, steps, material and labor. With OBPM, manufacturers can create, maintain, complete and close manufacturing orders directly from a variety of sources, including customer orders, MRP planned orders, or from the list of items found at or below the order point. They can get details on the availability of specific components before releasing the orders. OBPM even enables manufacturers respond to MRP recommendations for purchase and manufacturing orders to maintain the smooth production workflow. And with MAPICS Java Architecture functionality, they can create and manage customized views and queries to display the information the way they want it presented.

Features

Navigation

User Control of Information Viewed

Security Access

Flexible Order Creation,
with Component Availability
Checking, and Shop Packet Printing

Reorder Recommendations

Purchase Orders

Intersite Orders

Maintain Orders

Manage Open Orders

Close Orders

Print

Advanced navigation between objects and processes via toolbar buttons, menus, hierarchical tree structures and drill-down capabilities

Define the way information is presented to each user, for maximum user productivity

Restrict or allow access to specific information on a user-by-user basis

Create/release manufacturing orders from:

- Planned orders, from Material Requirements Planning (MRP) or Advanced Planner (AVP)
- Customer orders for standard items, Cameleon-configured items, or features/options items, entered in any MAPICS Customer Order entry application,
- OBPM Reorder Recommendations (see below), User / manual input

Use bills and/or routings from Production Data Management (PDM) or Enterprise Production Data Management (EPDM), or from an open or history manufacturing order

Interactive review of component availability for order/s being released

Options to print shop packet at release

Generate Reorder Recommendations, the order-point items requiring reorder, and optionally create replenishment orders

Integrate with Procurement Management (PM) to create purchase requisitions or orders from planned orders or Reorder Recommendations

Integrate with InterSite Logistics (ISL/MISL) to create intersite orders from planned orders or Reorder Recommendations

Change orders, including importing bills and/or routings not available from engineering when the order was created, canceling and activating an order, and linking or unlinking to a customer order

Generate and view work lists interactively, and see open order information by user-defined criteria

Interactively review and enter the required transactions to complete and close out an order

Print shop packets, shortage reports, work lists, and manufacturing order close transaction registers on demand

Availability

Beginning with MAPICS ERP for iSeries Release 6

Requirements

Inventory Management (IM)

Production Control and Costing (PC&C)

MAPICS is the largest, global solutions provider focused exclusively on manufacturing. Building on more than 25 years of industry experience and proven success, MAPICS helps manufacturers be world class by gaining market share, operating at peak efficiency, and exceeding customer expectations.

©Copyright 2003 MAPICS, Inc. MAPICS is a registered trademark of MAPICS, Inc. All other brand and product names may be trademarks of their respective owners. MPDSOBPM

Benefits

- Provides easy access to MAPICS information—no need to exit and start new sessions with other installed MAPICS Java Architecture applications
- Enables more consistent and productive desktop environments for your enterprise
- Ensures better use of enterprise resources with user-based customization
- Increases confidence in data security
- Promotes quicker data analysis through sorts and subset capabilities

Browser

The Challenge

MAPICS' industry-leading ERP solution offers users access to critical product, customer and vendor information, as well as valuable financial and manufacturing data. But navigating the system to get to the information they sometimes can be a daunting task for users.

The MAPICS Solution

MAPICS Browser is the main window for all of your MAPICS Java Architecture applications. With MAPICS Browser—tailored to each individual's unique needs—users have an effective desktop environment from which they can easily access and view the information they're looking for across key MAPICS applications, including customer service, engineering, finance, inventory, procurement and production information. With simple navigation, user-level customization, drag-and-drop arrangement of fields, attachments and “book marking,” users increase their productivity without tying up limited IT resources.

MAPICS Browser takes the valuable information in your system and lets the user arrange and display it the way they want it to. Whether it's traditional lists, tree-structure hierarchical groupings, or index “cards” that the user can “flip” through with the click of a mouse, MAPICS Browser lets you arrange application information into multiple groupings and sequences that make sense to your individual needs. You can hide information that doesn't apply to your particular job or task. Arrange information by subset records to work with only the information that applies to the job you're currently performing. And customize information for individual users, groups of users or all users. And the familiar interface means that learning to navigate through the system is easy and user-friendly.

Intuitive Browser

Customized Views

Point-and-Click Navigation

Application Objects

Workbench

History

Bookmarks

Features

Utilize intuitive list boxes, card files and icon-based tree structure views

Customize data views, subsets, sorts, cards and attributes by user

Use toolbars, pull-down menus, drop-down lists and push buttons to locate the information you need

Provides seamless integration to MAPICS applications without compromising security of data in each application

Open several different "task-related" windows of MAPICS information, arrange them to your liking, then save the view for future use

Access complete navigation history of prior sessions

Lets you tag specific windows for easy access—from all MAPICS browser windows

Availability

MAPICS ERP for iSeries Release 5

Requirements

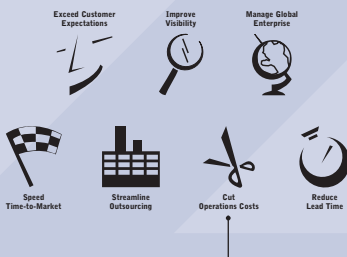
MAPICS CAS

MAPICS is the largest, global solutions provider focused exclusively on manufacturing. Building on more than 25 years of industry experience and proven success, MAPICS helps manufacturers be world class by gaining market share, operating at peak efficiency, and exceeding customer expectations.

©Copyright 2003 MAPICS, Inc. MAPICS is a registered trademark of MAPICS, Inc. All other brand and product names may be trademarks of their respective owners. MPDSBROW

Benefits

- Eliminates multiple or time-consuming data entry processes
- Enhances navigational abilities to access critical data
- Allows for the creation of dynamic queries
- Increases the speed that you can get your work done
- Lets you make entries with as little as two mouse clicks
- Removes batch processing requirements
- Improves file maintenance
- Lets you choose your preferred visual presentation of data—from card files, list views and tree structures



Materials Management

Materials Management (MM) is part of the MAPICS ERP for iSeries Java Architecture, providing you with easy access to all of the information you need to control and manage your inventory using a familiar, user-friendly Windows architecture. MM gives you increased visibility to your receiving schedule, and it helps you to reduce or eliminate manual data entry that often results in inventory inaccuracies. Materials Management helps you to improve your physical inventory and cycle-counting processes, even across multiple warehouses. And with the enhanced features of the ERP for iSeries Java Architecture, MM greatly improves your navigation and configuration possibilities.

The Challenge

Signs of successful manufacturers often begin with how well and how quickly they can manage and track their inventory. This can prove to be a daunting task due to several areas of concern for manufacturers: streamlining the receiving process, identifying item shortages, reducing the physical inventory and improving file maintenance. Manufacturers must also improve the speed and efficiency of their inventory file maintenance processes to make sure they can get the job done on time and without errors.

The MAPICS Solution

MAPICS ERP for iSeries Materials Management solution offers you inventory accountability with the ability to perform inventory file maintenance, purchase receipt and inventory counting functions—all from one location. MM enables data entry with minimal mouse clicks rather than multiple keystrokes, allowing you to increase the speed that you can complete tasks while eliminating manual data entry errors.

From within MM, you can build and customize your own views and queries to display information the way you want it presented. You can navigate to and from the data (inside and outside MM) via toolbar buttons, automatically generated menus, hierarchical tree structures and drill-down functions to quickly get the information you need. You can even construct business process “workbenches”—sets of windows that you use on a daily basis that can be saved and recalled in a single mouse click—for fast and efficient production. In addition, the framework of the ERP for iSeries Java Architecture lets you navigate from MM to other Java Architecture applications, where you can continue managing your business processes.

Navigation Between Related Objects

User-controlled Content Retrieval

User-controlled Data Entry and Maintenance

Schedule Purchase Receipts

Schedule Purchase Receipts Views

Quick Transaction Receipt

Item Storage Inquiry

Inventory Count Groups

Inventory Counting Reports

Discrete Allocations Transaction History

Features

Navigate between related objects via toolbar buttons, automatically generated menus, hierarchical tree structures and detail drill-down capabilities.

Allow users to control the content and sequence of the information they view through security; views, subsets and sorts of list windows; cards and card files; and user-defined preferences.

Empower users to control the information that goes into the system and the maintenance of that data. Security features protect sensitive data, and users leverage templates, cards and card files, attachments, user preferences and mass maintenance to enter data.

Improve the productivity of warehouse receiving employees by determining items available for receipt based on information from the purchase orders object.

View schedule purchase receipts from various starting points, including purchase orders, buyers, vendors, warehouses and item warehouses, allowing for quick navigation to the correct information.

Quickly produce transaction receipts to efficiently complete items and purchase orders. Automatically select and generate the appropriate transactions based on scenarios: receipt to dock, receipt to inspection, receipt to stock, return to vendor.

Identify where materials are urgently expected with immediate item storage inquiry during the receipt process.

Leverage the combined functionality of a total physical inventory and cycle counting for more selective inventory counts. Target specific items based upon multiple criteria, and decide when and how you want to audit inventory.

Count inventory via tags, lists or radio frequency devices.

Review and evaluate count activity. Run reports on counted and uncounted items, variances and staging location return-to-stock.

Perform inquiry from many different objects through MAPICS ERP for iSeries and Java Architecture.

Availability

MAPICS ERP for iSeries Release 6

Requirements

MAPICS CAS, MAPICS IM

MAPICS is the largest, global solutions provider focused exclusively on manufacturing. Building on more than 25 years of industry experience and proven success, MAPICS helps manufacturers be world class by gaining market share, operating at peak efficiency, and exceeding customer expectations.

©Copyright 2003 MAPICS, Inc. MAPICS is a registered trademark of MAPICS, Inc. All other brand and product names may be trademarks of their respective owners. MPDSMM



Benefits

- Ensures you have the proper inventory to fulfill demand
- Frees plants to be used for production, instead of inventory
- Facilitates bill of material accuracy
- Delivers timely planning information for suppliers
- Recommends production and purchase quantities, as well as start dates
- Reduces the instance of manual and human errors by automating the process

Material Requirements Planning (MRP)

MAPICS MRP lets manufacturers plan production and purchase orders to meet forecasted and actual customer requirements—from reviewing requirements, entering requirements for master level items, through planning and releasing supply orders, and identifying changes required to released orders as requirements change. MRP can be used alone or in conjunction with MAPICS Master Production Schedule Planning (MPSP), InterSite Logistics (ISL/MISL), or Capacity Requirements Planning (CRP), to address planning needs.

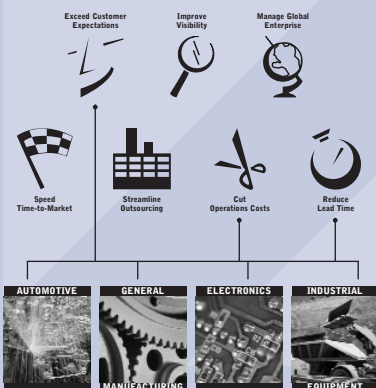
The Challenge

Manufacturers struggle with maintaining just the right amount inventory. They must strike a balance between what is actually consumed and what they anticipate will be needed. Excess inventory can be costly; insufficient inventory even more so.

The MAPICS Solution

MAPICS MRP ensures manufacturers will always have the right parts and components on hand to fill orders. It projects when to produce or purchase materials and specifies how many items are needed, based on demand requirements. After specifying how many end-items or service parts are needed and when, MRP uses the bills of material specified in Product Data Management (PDM) application to examine each component part and recommend replenishment orders as necessary.

During the planning run, MRP examines the balance of each inventory item, and if the requirements entered exceed the quantity on hand, the system automatically generates a planned order, which recommends purchasing or building a given quantity of an item (specifically, the amount necessary to bring inventory's on-hand balance to a level at least high enough to the requirements) by a specific date.



Master Level Item Scheduling

Interactive review of forecasts, customer projected demand received via EDI, and customer orders, and entry of "manual" item demand. Optional interface with Forecasting (FCST), Electronic Commerce (EC), Customer Order Management (COM/CSM), Master Production Schedule Planning (MPSP).

Multi-Warehouse Demand Planning

Include forecast or customer orders from distribution sites, and planned intersite orders from other production sites while planning the supplying warehouse. Optional interface with InterSite Logistics (ISL/MISL).

Requirements Planning

Plan new supply (production, purchase and intersite) orders and changes to existing orders, to meet requirements, considering safety stock, bill of material, item lead time, ordering policy, and existing on hand and supply orders. Optional interface with Capacity Requirements Planning (CRP) to review planned load over time vs. capacity.

Planned Supply Order Release

Interactive review and release of new supply (production, purchase and intersite) orders, including component availability check for production orders. Optional interface with Order Based Production Management (OBPM), Purchasing (PUR), Procurement Management (PM), InterSite Logistics (ISL/MISL).

Planned Demand Transfer

Transfer planned demand to other production sites using InterSite Logistics (ISL/MISL). Send projected demand to suppliers as EDI planning schedules using Electronic Commerce (EC).

Availability

Beginning with MAPICS ERP for iSeries Release 6

Requirements

Inventory Management (IM)

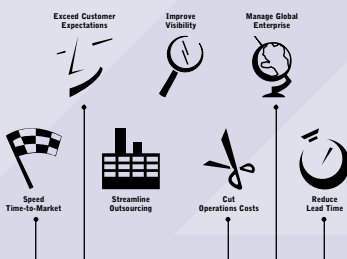
Either Enterprise Product Data Management (EPDM) or Product Data Management (PDM)

MAPICS is the largest, global solutions provider focused exclusively on manufacturing. Building on more than 25 years of industry experience and proven success, MAPICS helps manufacturers be world class by gaining market share, operating at peak efficiency, and exceeding customer expectations.

©Copyright 2003 MAPICS, Inc. MAPICS is a registered trademark of MAPICS, Inc. All other brand and product names may be trademarks of their respective owners. MPDSMRP

Benefits

- Increases user productivity with common interface across multiple functions
- Offers tight integration with direct navigation to and from non-MAPICS applications
- Allows for rapid implementation
- User friendly—no programming required
- Reduces support costs with fewer custom programs and fewer user questions
- Integrates easily and seamlessly with MAPICS ERP for iSeries applications



MAPICS Integrator

MAPICS Integrator enables you combine all of your enterprise information from your IBM iSeries server into one powerful client architecture—quickly and cost effectively. Users experience a seamlessly integrated interface to all of their enterprise's applications, and manufacturers can take advantage of the powerful customization features that have made MAPICS' Java Architecture so popular. And all of this is available without any modification to your system.

The Challenge

Companies invest in packaged software because of its promise to alleviate a business problem ... and because most companies don't want to be in the business of building their own applications. But no packaged application, no matter how sophisticated or rich in functionality, can meet every company's exact needs.

A typical enterprise contains a combination of packaged solutions from a variety of vendors as well as custom-written code that may have evolved over the years. The result is usually a wide variety of technologies and an even wider range of user interfaces. Bringing together those various applications into one consistent presentation format isn't easy to do. And modifying the software is not the answer, especially when it forces companies back into the coding business.

The MAPICS Solution

In addition to combining all of your enterprise information from your iSeries server into one architecture, MAPICS Integrator lets you extend beyond your MAPICS database to seamlessly integrate additional data with appropriate MAPICS objects. The result: customized objects that look and behave exactly like standard MAPICS objects. Integrator also provides the hooks necessary for navigation between systems. And it's all done without changing one line of MAPICS code, so new release migrations are simple and painless.

Integrator also completes all the same tasks for MAPICS and non-MAPICS files, so any application on your IBM iSeries server is a candidate for Integrator. And with Integrator, you have options. You can create objects without programming. With Integrator, you can create completely new objects based on non-MAPICS data. These new objects may have their own complex relationships with other new objects, and/or they may have their own extension files. At the same time, you can add sophistication to the new objects without modifications to MAPICS, such as user actions, user exits and trigger programs. Integrator even works with multimedia attachments and bookmarks.

Integrator gives you an extended ERP desktop based on the MAPICS Java Architecture. You can convert user-written or third-party applications to this client-server architecture easily and quickly. Or even design completely separate systems. With Integrator, the possibilities are endless.

Data Elements

Expand the database for items, customers, vendors or any other business object.

Comments

Add comments to any business object. Segregate comments for an object by department, project or other criteria. A historical option lets you add running comments for customer support logs.

Actions

Add a menu with your own options to a business object. Call other applications or start jobs on your own PC, the network or iSeries.

New Objects

Create business objects over your own data files or those of other applications. Menu options provide seamless navigation between your objects and MAPICS objects automatically.

Field Security

Make one or more fields maintainable for some users, view-only for others and hidden to everyone else.

Content Security

Limit a user's access to certain records in an object, such as items in one warehouse or orders for one territory.

Multiple Devices*

*R7 only

Access your enhanced Integrator objects from your PC, via the Web and with XML automatically.

Client API

Access MAPICS objects from other desktop applications.

MAPICS is a visionary, global software company focused exclusively on delivering collaborative business applications and expert consulting services that help manufacturers become world class.

©Copyright 2002 MAPICS, Inc. MAPICS is a registered trademark of MAPICS, Inc. All other brand and product names may be trademarks of their respective owners. MPDSINTG

MAPICS Supply Chain Management

Creating *World-Class* Manufacturers



Today's digital economy means manufacturers must make fundamental shifts in the way they conduct business. Emerging technologies have helped organizations better manage suppliers, internal processes and customers. As a result, customer expectations have skyrocketed—and will continue to rise.

To stay competitive in today's market, you must take advantage of those strategies and technologies to help you meet the unique and ever-changing needs of today's demanding customer. This means going beyond just working within your enterprise. It means interoperating seamlessly with customers and suppliers alike. It necessitates a functional transformation, one that extends the actions and reactions of your enterprise.

Doing business as an extended enterprise puts added emphasis on collaboration. You need to synchronize your activities by linking disparate individual business systems into integrated processes designed to meet customer demands. It forces you, your customers and your suppliers to work together seamlessly to create, distribute and support your products. It helps participating companies coordinate resources, improve relationships and build trust. And in an economy where entire supply chains compete, effective synchronization of the supply chain can reap large rewards for all organizations involved.

To answer this challenge, MAPICS has the solution to enable you to build from your core business system. It allows you to improve communications with your downstream customers, while simultaneously forming tighter relationships with your upstream vendors. MAPICS customers are now using workflow automation, business intelligence, advanced planning engines and customer relationship management to improve order fulfillment processes across the supply chain. As a result, many of the unnecessary and lengthy delays so prevalent in today's fulfillment process are virtually eliminated. It is now possible to efficiently promise, plan, source and fulfill one customer order at a time across your entire supply chain.

Make a promise, keep a promise

Sell

Customer expectations continue to reach new heights. In recent years, the emergence of web technology has convinced customers that they should demand exactly what they want, when they want it and at a price they want to pay. These demands are now driving innovation throughout the market—and must become the focus for every organization that wants to succeed.

Although nearly every company today has a customer satisfaction program, few can ensure customer satisfaction outside their four walls. Until recently, the best an organization could do was to align itself with other companies promising customer satisfaction—and trust that they practiced what they preached.

Today, however, with the MAPICS supply chain solution, you can participate in a value chain that makes promises that can be kept. Goods and services flow smoothly from raw material suppliers through manufacturers and distributors to customers. As customers' needs change, your entire supply chain can adjust accordingly—even in the midst of fulfilling a particular order. By continually aligning the order fulfillment process, your customer expectations are met, if not exceeded.

Promising for make-to-stock and make-to-order

The challenge of satisfying a customer request begins at the time of order promise. It is here when you begin to properly align supply with demand. Depending on how that item is produced, the promising function changes.

For make-to-stock items, order promising is usually a straightforward exercise of knowing whether the item is on-hand or not, and then reserving this inventory as commitments are made. While this process is necessary, it is not necessarily sufficient. If the item is not in inventory, the customer's request might be satisfied through future supplies. By including these supplies in the search, the MAPICS supply chain solution provides an availability timeline, giving your customers a more complete view of your stocked items and helping you lock in more business.

For make-to-order and assemble-to-order items, order promising is not contingent on inventory availability. Consequently, production capacity takes on added importance. This is where traditional functionality is extended, for it is specifically designed to serially slot orders into available capacity. At the time of order entry, your sales people or even your customers, if authorized, can immediately see whether you have enough capacity to meet the request date. And if not, when, or how much can be promised.

This same capacity view can also be applied to your stocked items that are currently out-of-stock and not scheduled to be produced. In these situations, you can shift to a capacity representation to determine when the item could be made available—again providing helpful answers when traditional systems would be at a loss.

With the MAPICS supply chain solution, you can give your customer accurate shipment dates in response to availability requests. Then, once the order is committed, you are able to immediately reserve the associated inventory and capacity, ensuring that you don't promise beyond what you can keep.

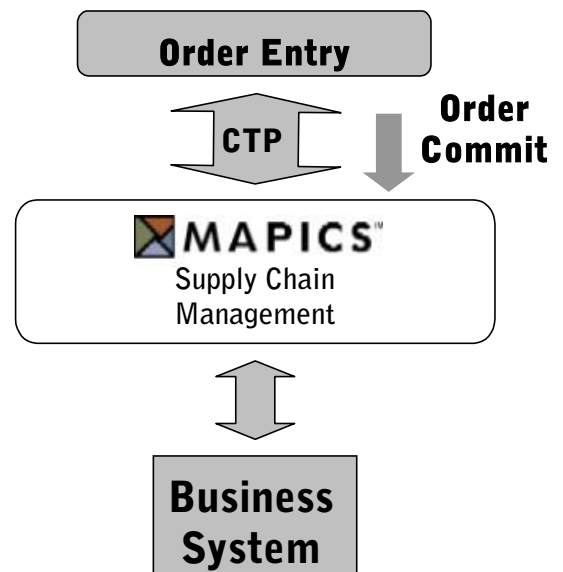
The MAPICS supply chain solution provides realistic promise dates considering the following constraints:

- Customer priorities
- Material availability
- Production capacity
- Bottleneck operations
- Outsourcing options

Plan

Operating as an extended enterprise requires added capabilities for collaboration. You must synchronize the efforts of many, often disparate, companies in response to end-customer demand. The challenge comes in knowing how to dynamically align supply with demand in this high-velocity trading community.

Initial planning requires you to realistically and rapidly determine your ability to deliver, taking into consideration available inventory and production capacity. MAPICS offers a variety of availability models to address this requirement. Inventory models, primarily used for promising SKUs in make-to-stock environments, allocate orders against uncommitted inventory and planned supplies. Capacity models, on the other hand, extend the inventory model concept to include a manufacturer's ability to actually make the item. Capacity models are generally used in to-order environments and fall into two categories: rate-based and route-based. Rate-based models serially slot order items into available capacity, where capacity is defined by the item's flow rate. Alternatively, route-based models use the item's bill-of-material and associated component routes to ascertain when the item can be manufactured, given the requisite material and work-center capacity constraints.



The planning process also requires you to provide the necessary visibility to the other participants in the supply chain, including extending yourself at collaboration points (for example, those locations in your organization from which you directly face either a customer or a vendor). MAPICS applications that support this on the customer-facing side include self-service web order entry systems and Customer Relationship Management (CRM). Vendor-facing collaboration focuses on the supply side of the chain, where you need to gain instant visibility into the vendors' abilities to deliver. Here again, MAPICS' array of availability models deliver important productivity gains by providing the most current product information and by assuring that your customers consistently get the best information available.

Source

Coordinating suppliers is a continuous process. Depending on the customer being served, what is being requested, and how one is able to serve them, the situation requires flexibility. Some customers are more important than others; some orders are more urgent than others; and some suppliers, at any point in time, are more responsive than others. This calls for availability models of the source sites and a means of providing situation-dependent sourcing decisions at the time of order entry.

Given this visibility, the challenge becomes quickly sorting through this new wealth of information. This calls for a decision support module that allows you to embed flexible business rules into the decision making process to intelligently perform the necessary sourcing function, one order at a time. Depending on your situation, you may need to select the least-cost supplier, the supplier that can deliver the fastest, or even the lowest-cost supplier of those that can deliver by the end of the week. In any case, you need to determine which options are available and make the best choice, based on your priorities, from these options. And all this must be done in real time, while you are on the phone to a customer or online with your planning system, no matter where your suppliers are located.

The MAPICS supply chain solution applies highly granular, user-defined sourcing rules to quickly and precisely differentiate vendor responses, helping to ensure that the selection for a particular order is made according to your business interests. By automating the decision process, key order fulfillment performance factors are optimized for each order and reliable promises are made within the current constraints of your existing supplier network—all in real time. This gives you not only the visibility to respond to today's extremely time-sensitive demands, but also the means to quickly adapt to your ever-changing business environment.

Make

Historically, it was customary to have large work-in-process buffers and finished goods inventories in a factory to absorb production flow problems. These buffers made it possible to independently plan and schedule the resulting and simpler subsystems. With experience, manufacturers could make the necessary products on time.

As new practices have permeated manufacturing enterprises worldwide—such as JIT, lean manufacturing and continuous improvement—the result is leaner, more agile and more tightly integrated systems. Moreover, this same thinking is reaching outside the enterprise—to the supply chain. JIT chains, where part deliveries occur just minutes before they are needed at the downstream facility's production line, are advocated as a way to further reduce excess inventories. The result is a far more tightly coupled, strongly interdependent supply chain system.

The transfer of valued information in a timely manner is central to maintaining continuous flow in the enterprise. Point-of-sale information must be driven as far upstream in the chain as possible. This significantly lowers the volume of inventory that must be carried to offset the bullwhip effect inherent in these chains. Conversely, for events that occur on the supply side, all participants in the chain must be notified immediately of the occurrence so as to adjust their production accordingly. Immediate notification of events, both on the demand and supply sides, is possible through the deployment of the MAPICS supply chain solution and with it, you have access to the information you need to efficiently manage your production.

In addition, moving to a transaction-based system, which is possible under MAPICS' solutions, allows for further inventory reductions. Reacting to demands on an order-by-order basis eliminates the adverse effects of planning time delays that force higher levels of inventory. Triggering inventory replenishments on individual, rather than batched, demands shortens the replenishment cycle and improves production velocity through the chain, meaning your customers receive your products sooner.

Make versus Buy decisions

Manufacturers are always looking for ways to further streamline their business. All too often they find themselves bogged down in cumbersome production processes that are outside their core competency.

With the MAPICS supply chain solution, you gain detailed insight into your future critical load at each of your facilities. From this, you can intelligently manage make versus buy decisions to best balance your customers' needs against your ability to deliver. With this comprehensive and unified view of production, you know exactly what and how much you need to buy, and for whom.

Deliver

Manufacturers face intense competition to deliver on time. Customers are demanding a greater variety of options, more last-minute changes, shorter lead-times and rapid response for build-to-order and configure-to-order products.

In response, you need to find innovative ways to deliver your products on time and at lower costs. The ripple effect is forcing you to be just as demanding of your upstream partners. The challenge is to keep up with the heavy demands of your customers by forging tighter relationships with your suppliers.

At the same time, like many manufacturers, you are challenged with an operational plan that is constantly changing to accommodate fluctuating demand. Material and production capacity are real constraints. You probably have several critical resources that control your throughput.

The MAPICS supply chain solution lets you efficiently plan your production operations based on changing order requirements, instantaneously determine the impact of these changes, and realistically quote delivery dates. The result is an order fulfillment process that continuously updates and reliably delivers. Moreover, participants in the supply chain are provided the information they need to continually align their supply with demand—to ultimately deliver on time. The result is a customer-synchronized collaborative solution across the extended value stream.

Service

Keeping the customer informed is more than half the battle. Once a customer's expectation has been set as to a delivery date, managing production to that date and keeping the customer informed of the progress towards delivery are key to a strong and continued relationship with that customer.

The MAPICS supply chain solution keeps visible the projected status of all customer orders. This means customer support personnel have access to the latest order information—a data-rich breakdown of where all orders are projected to be throughout the manufacturing cycle.

It takes into consideration the current ability of your suppliers to comply with your outstanding requests, the status of your shop floor, and your capacity to produce. This lets you better serve your customers by keeping their orders on track.

And if an order does get off track, you have the ability to notify the customer of that change at the time it occurs. Customers don't appreciate surprises. They like knowing the real status of their orders. The MAPICS supply chain solution provides the means to keep your customers continuously informed, giving them more options to adjust to a change and more time to deal with the implications of that change.

Finance

Inventory is usually the largest single investment of a company's working capital. As companies have focused on increasing customer satisfaction, some have opted to carry even greater quantities of inventory to ensure they can meet customer demand, increasing their costs even further.

The MAPICS supply chain solution delivers improved demand visibility throughout the supply chain. This increased visibility allows all supply chain participants to clearly see which orders can be expected. As a result, they are able to lower their inventories without sacrificing service levels. Since inventories are better aligned with demand, these companies are also able to reduce the amount of obsolete inventory they carry.

The MAPICS supply chain solution also brings companies closer together. As manufacturers deploy e-commerce -business solutions to meet supply chain needs, they find electronic processing of routine transactions even easier to conduct. Orders, invoices and payments may be executed automatically, lowering costs for all participants within the supply chain. Studies have found that electronic ordering alone can reduce transaction costs from hundreds of dollars to mere pennies per transaction.

Moreover, by managing an effective supply chain, mid-market manufacturers retain satisfied customers and increase profits. As a result, publicly held companies increase shareholder trust, which often results in additional investments from existing and new shareholders. On the other hand, supply chain problems are frequently red flags for shareholders, prompting some to pull investment dollars, lowering shareholder value for the manufacturer.

Creating *World-Class* Manufacturers



The MAPICS supply chain solution helps manufacturers avoid problems such as material shortages and production bottlenecks. Moreover, this technology helps the entire supply chain adjust rapidly to customer requests and changes. Shareholder value is maintained or increased as a result.

Conclusion

Through the MAPICS supply chain solution, customer satisfaction and shareholder value can be improved while simultaneously lowering transaction and inventory costs. This provides a means for you to improve your competitive advantage in today's digital economy where you must continue to find new ways to meet and exceed the increasingly high demands of your customers. In addition, this same solution provides the means for you to better manage your customers, suppliers and own internal processes in this new world of unpredictable behavior and endless disruptions. Your value proposition is a tactical advantage, one that gives your supply chain the ability to compete as a well-integrated value stream.

About MAPICS

MAPICS is the largest global solutions provider focused exclusively on manufacturing. Building on more than 25 years of industry experience and proven success, MAPICS helps manufacturers be world class by gaining market share, operating at peak efficiency, and exceeding customer expectations. MAPICS solutions include software—extended ERP, CRM, and supply chain management—and professional services. The solutions are implemented on the two industry-leading technology platforms—Microsoft and IBM.

Headquartered in Atlanta, MAPICS has implemented solutions in more than 10,000 customer sites in more than 70 countries. For more information, visit www.mapics.com.

© Copyright 2003, MAPICS, Inc. MAPICS is the largest, global solutions provider focused exclusively on manufacturing. Building on more than 25 years of industry experience and proven success, MAPICS helps manufacturers be world class by gaining market share, operating at peak efficiency, and exceeding customer expectations.

MPOVSPCH



Benefits

- Reduces manufacturing and reporting errors
- Shortens lead times and lowers costs
- Improves production control
- Improves shop floor communication
- Controls strategy violations
- Reduces scrap and re-work
- Creates more accurate tool inventory
- Reduces manufacturing delays during set-up

Paperless Manufacturing

If the shop floor is the heart of the manufacturing operation, accurate and timely information is its soul. Only by ensuring that one is never without the other can you guarantee the viability of the manufacturing enterprise. By extending the electronic collection and distribution of information to the shop floor, Paperless Manufacturing brings your MAPICS ERP for iSeries extended enterprise solution full circle. All the critical data you need to run a streamlined operation is now fully integrated—from design specs to quality control, from tool maintenance to scheduling information.

Paperless Manufacturing brings you electronic data capture and two-way, online communication. It is comprised of three modules:

Manufacturing Data Collection and Communication (MDCC) – Provides any employee, from the shop floor to the customer service center, online access to complete, current information about a manufacturing order.

Quality Reporting and Management System (QRMS) – Integrates comprehensive quality control information directly into the ERP database.

Tool Management and Planning System (TMPS) - Tracks and manages tool requirements at every stage of the manufacturing process.

Manufacturing Data Collection and Communication

Traditional shop packets are costly to produce and are typically obsolete almost before they're off the press. When updates are needed, every copy on the shop floor has to be located and replaced. If one slips through the cracks, the results can be disastrous. Employees may not discover they're using outdated manufacturing instructions until they've already completed much of the work—or until a customer complains about a delivered product.

With MDCC, production workers have instant access to the latest and greatest instructions and CAD drawings directly from a PC terminal. They can also enter production information including time and attendance and labor and inventory transactions using an easy interface. This allows them to concentrate on working efficiently for the customer, rather than waste time chasing paper or rebuilding parts to the correct specifications.

MDCC empowers production workers to perform more efficiently, and office workers become better informed about what is actually taking place on the plant floor. The result? Satisfied customers, lower costs and an incredible return on investment.



Features

- Generate electronic shop packets
- Online access to complete, current information about manufacturing orders
- Track and manage tool requirements
- Enter information via touch screen interface
- Feed PLC data directly into the system
- Integrate tooling with MAPICS Inventory Management system

Quality Reporting and Management System

For any manufacturing facility striving for ISO-9000 or QS-9000 compliance, quality control is of enormous importance. Traditional stand-alone quality reporting systems, however, require information to be entered and tracked separately from the ERP system. In other words, inefficiency is built right into the system.

In contrast, QRMS is fully integrated into MAPICS ERP for iSeries. All information concerning every manufacturing job—including quality standards and results—is stored in a single database, not scattered across multiple systems.

As a result, shop employees can view the latest quality standards, along with the work order, from a PC terminal. No more non-compliance due to outdated or misplaced documentation. In addition, PLC data can feed directly into QRMS, notifying operators immediately if predefined test limits are exceeded, and manual data entry errors are instantly detected and can be corrected on the spot.

Without an integrated quality control system, you may not know how much it really costs to shut down a line or rectify a mistake. But QRMS allows you to track and report these costs at the source. Even more important, it reduces such costs exponentially by catching errors early in the manufacturing process.

Tool Management and Planning System

What if a production line was starting up, the employees were prepared to work—and there weren't any tools? It's more than a hypothetical question. Some manufacturers regularly experienced this scenario before installing TMPS. As a result, customer orders were actually delayed because tools were not available when and where they were needed.

For plants that use thousands of tools in different manufacturing processes, TMPS is a real necessity. This Paperless Manufacturing module provides efficient ways to determine which tools are needed for each manufacturing order, and where those tools are located.

© Copyright 2003, MAPICS, Inc. MAPICS is the largest, global solutions provider focused exclusively on manufacturing. Building on more than 25 years of industry experience and proven success, MAPICS helps manufacturers be world class by gaining market share, operating at peak efficiency, and exceeding customer expectations.

MPDSPM



Benefits

- Increases productivity
- Reduces paperwork
- Improves response time
- Enhances quality of service
- Streamlines crucial business processes
- Improves data reliability
- Improves results and performance

MAPICS Workflow

An organization's core business processes are often the very functions that appear to undermine productivity the most. The paperwork to perform these tasks keeps piling up. Efficiency keeps going down. But MAPICS ERP for iSeries Workflow streamlines crucial business processes—thus improving both results and performance.

MAPICS Workflow makes it easy to document, streamline and automate business processes. Furthermore, integration with MAPICS ERP for iSeries provides even more power to your enterprise. And its handy point-and-click design allows you to create and deliver customized applications for process management without assistance from the IT department.

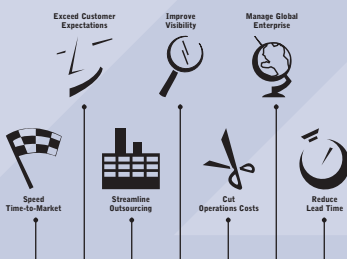
Snap-to-grid icons, color coding, user-friendly workflow, screen building and “one-click” Web development functions allow your enterprise to quickly create your own applications with visual workflow charts.

MAPICS ERP for iSeries Workflow consists of three components: Runtime, Workflow and Application Builder, and Web Server.

Stay on Top of it All with Runtime

Runtime is the control center of MAPICS Workflow. Runtime allows users to initiate or complete workflow tasks, review the status of open workflows, and view vital information for steps within workflows. It features a graphical view of open workflows, color coding each workstep so that users immediately are aware of the current status of the workflow.

Important information related to each workstep is just one click away, and managers can be automatically copied on workflows that involve their personnel.



Features

- Point-and-click design to easily create and deliver solutions
- E-mail notification to initiate tasks
- Pre-established workflow templates
- Create, test and deploy workflows throughout the enterprise
- Integrates with Microsoft Exchange, Lotus Notes, Groupwise and other mail tools
- Convert client-server applications to Web-deployed applications in seconds

Create and Test Applications with Workflow and Application Builder

The Workflow and Application Builder is the tool by which workflow applications are created, tested and deployed throughout the enterprise. You can create a variety of complex workflow processes, while producing graphical displays that make it easy for users to interpret and monitor progress. In addition, the Application Builder lets you rapidly construct and modify customized applications to meet document and data management needs without traditional programming efforts. This ease of use—coupled with integration with MAPICS ERP for iSeries—creates a powerful tool certain to increase productivity.

Deploy Throughout Your Enterprise with Webserver

The Web Server features “one-click” Web deployment capability, allowing you to convert client-server workflow applications to Web-deployed applications in just seconds. Web applications are also just as easily changed and re-deployed without the use of webmaster resources.

More Tools to Make Development Easier

MAPICS ERP for iSeries Workflow also offers other features to aid you in development:

- Debugging allows the developer to operate as a user in one window while keeping the Application Builder available in another window. Attributes applied to screens can be easily viewed as they are being operated.
- Database query considerations, a subset of commands used in conjunction with one another, allow for the selection of specific records from the database.
- List table development considerations are a subset of commands that are used to manipulate entries within a list table.
- Workflow development considerations are script commands that are available for use on screens used within a workflow. Some are used specifically to trigger when or how the system should progress on the workflow.

MAPICS is the largest, global solutions provider focused exclusively on manufacturing. Building on more than 25 years of industry experience and proven success, MAPICS helps manufacturers be world class by gaining market share, operating at peak efficiency, and exceeding customer expectations.

©Copyright 2003 MAPICS, Inc. MAPICS is a registered trademark of MAPICS, Inc. All other brand and product names may be trademarks of their respective owners. MPDSWF

Benefits

- Enhances responsiveness to change
- Provides flexible reporting
- Supports multiple currencies; globally enabled
- Enables fiscal and government reporting capabilities
- Provides immediate access and visibility

International Financial Management (IFM)

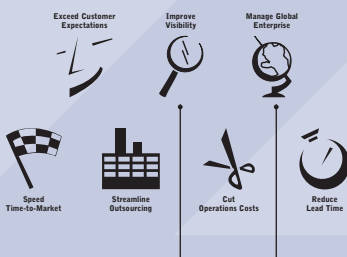
MAPICS ERP for iSeries International Financial Management (IFM) helps organizations—from small businesses to complex multi-national organizations—run their organizations with powerful multi-company, multi-currency and international language and taxation functionality. IFM also offers tightly integrated general ledger, accounts payable, accounts receivable and budget and cash management functions.

The Challenge

In today's global work environment, a world-class enterprise must have superior financial tools—tools that enable global consolidation, complex multi-currency requirements, the sharing of data with trading partners and one-stop insight into the business source of financial events. Organizations must be able to quickly answer critical financial questions that can impact the business' bottom line: "Am I paying the agreed price to the suppliers in my procurement cycle?" "Are my customers only deducting payment discounts when they're allowed?" "What is the overall payment behavior of my customers?" Finally, global organizations need a financial management application that automatically applies local laws and business practices—such as sales tax versus VAT, withholding tax and legal charts of accounts—to transactions.

The MAPICS Solution

IFM applications are uniquely designed for today's complex, ever-changing business world and are not bound by yesterday's ideas. With drill-down capabilities to source business documents, IFM provides all the insight you need into your trading partners. You can set up simple, complex and even ever-changing organizational structures. Organizations can easily manage multi-currency business events with IFM's powerful multi-currency features. You can share trading partner information (such as credit information) across the enterprise. And automated interdivisional accounting helps you manage interdivisional financial events, such as corporate payments to suppliers, customer payments to corporate and cost allocations from one division to another.



Independent Reporting Definitions

Features

Conduct multiple organizational reporting. IFM uses independent definitions for reporting structures and calendars that are completely independent of the chart of accounts. They include all historical data for comparative reporting in the new views.

Flexible Reporting

Build reports using every conceivable form of organizational structure. Managers can develop and consider alternate views, create what-if scenarios and make projections.

Flexible Accounting Periods

Benefit from an unlimited number of accounting periods. Have soft closings with unlimited open periods and close subsidiary ledgers independently. You can also define unlimited receivable and payable aging buckets.

Three-way Match

Manage your suppliers more efficiently.

Multi-currency Support

Automatically perform conversions for multiple currencies. Ensure compliance with international taxations, including sales taxes, value-added taxes and other federal and provincial taxes. Prepare budgets for any currency.

Globally Enabled

Support countries' varying demands with global payment, payments by notes and drafts and inter-division transfers.

Fiscal and Government Reporting

Support often-conflicting requirements of corporate, internal and external (government) reporting with multiple structures for common data.

Net Payables and Receivables

Accommodate complex relationships. For example, allow net payables and receivables when a trading partner is both a customer and a supplier.

Aging and Collection

Offer flexible payment terms: date driven, user defined, online aging and exception reporting; any number of aging structures with unlimited number of periods; user-defined structures and periods; unlimited collection status.

Independent Reporting

Separate reporting from day-to-day processing. The data is always available and you'll never have to wait for other activities to complete.

Online Reporting Inquiry (ORI)

Keep select financial reports current with each transaction processed using online reporting inquiry (ORI). You'll have an up-to-the-minute look at key areas of your financial business. Drill down from summary level data all the way to the originating transaction.

Online Business Inquiry (OBI)

See summary information (with drill-down details) on invoices and payments, entity balances, credit checking figures, unapplied cash, unposted transactions, purchase orders, customer orders and cash payments and receipts. Tailor OBI to meet your specific needs, such as showing only past-due invoices.

Availability

MAPICS ERP for iSeries Release 6 or 7

Requirements

CAS

MAPICS is the largest, global solutions provider focused exclusively on manufacturing. Building on more than 25 years of industry experience and proven success, MAPICS helps manufacturers be world class by gaining market share, operating at peak efficiency, and exceeding customer expectations.

©Copyright 2003 MAPICS, Inc. MAPICS is a registered trademark of MAPICS, Inc. All other brand and product names may be trademarks of their respective owners. MPDSIFM

